

Temperature transmitter is an integral element of temperature sensor, available also as a separate component. It converts temperature sensor signal to analogue 4÷20mA, voltage 0÷10V or different signal. Transmitter can be placed directly in connection head or on TS-35mm rail.



Specification

Characteristic

- programmable transmitter
- mounting in connection head BA, NA
- excellent temperature stability
- intrinsically safe version ATEX II 1G Ex ia IIC T5 / T6

Input

Pt100: 2, 3, 4- wire (FLEX TOP 2202)
TC: B, J, K, N, S (FLEX TOP 2203)

Output

4÷20 mA

Measuring range

Pt100: -200÷850°C min. span 25°C
TC: see the table

Zero point adjustment

in full range

Accuracy

Pt100: 250°C < 0,25°C
> 0,1% of range
TC: see the table

Response time

< 0,7s (FLEX TOP 2202)
< 1s (FLEX TOP 2203)

Galvanic isolation

not present

Max. loop resistance

$R_{L \max} = (U_{\text{supply}} - 8) / 0,023 [\Omega]$

Output signal resolution

12 bit

Lead wire connection

< 2,5 mm²

Power supply

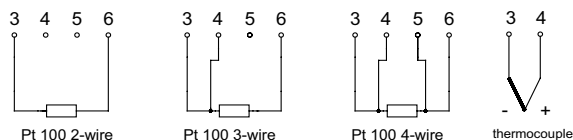
8÷35V DC ; 8÷28V DC for Ex version

Operating conditions

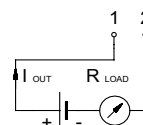
temperature: -40÷85°C
humidity: up to 98% RH non-condensing

CONNECTION SCHEMES

Input connections:



Output connections:



TC type	Measuring range	Min. temperature range	Accuracy
B (PtRh30-Pt)	100÷1820°C	50°C	> 500°C = 5°C
J (FeCu-Ni)	-100÷1200°C	50°C	3°C
K (NiCr-Ni)	-100÷1370°C	50°C	3°C
N (NiCrSi-NiSi)	-100÷1300°C	50°C	4°C
S (PtRh10-Pt)	-50÷1750°C	100°C	> 50°C = 5°C
voltage	10÷100mV	5 mV	0.2mV

Product code

		Transmitters version	
1	<input type="text"/>	2202	for Pt100
		2203	for TC
		Type	
2	<input type="text"/>	0001	standard
		0002-Ex	Transmitters version Ex
		Temperature range	
3	<input type="text"/>	(0÷100)°C	(0÷100)°C
			other parameters acc. to requirements
		RTD connection	
4	<input type="text"/>	2	2 - wire
		3	3 - wire
		4	4 - wire
		Equipment	
5	<input type="text"/>	A	with adapter for 35 mm rail mounting

1 2 3 4 5

FLEX TOP - - - -

Ordering example:

Transmitters FLEX TOP 2202-(0÷300)°C-4p