

MAXIMIZE UPTIME AND SAFETY – DISCOVER INNOVATIVE HEATING SOLUTIONS TAILORED FOR RAILWAY APPLICATIONS.

HEATING SYSTEMS FOR RAILWAYS

RELIABLE THERMAL SOLUTIONS
FOR SAFE AND EFFICIENT RAILWAY OPERATIONS.



LIMATHERM SENSOR LLC

1 Skrudlak Str.
34600 Limanowa
Poland

phone: **+48 18 330 1000**
mail: **akp@limathermsensor.pl**



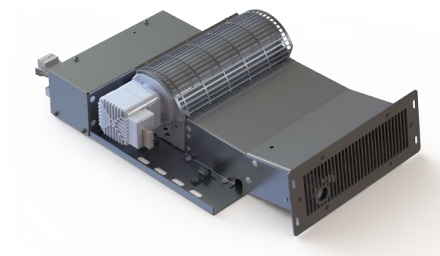
WWW.LIMATHERMSENSOR.COM

// TOUCHLESS HAND DRYING IN PASSENGER TRAIN CARS

HAND DRYERS

Hand dryer NS-01

- rated heating voltage: **230 V AC**
- control/fan voltage: **24 V AC**
- rated heating power: **1 kW**
- blowing temperature: **40÷65°C**
- blower operation time: **5÷25 sek.**
- dimensions (length/width/height):
414/243/98.2 mm

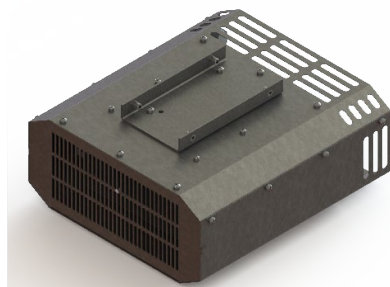


// **PRECISE WARMTH EXACTLY WHERE IT'S NEEDED**

ELECTRIC HEATERS

LIM NE-01

- rated heating voltage: **3x400 V AC**
- rated heating power: **1 kW / 2 kW**
- blowing temperature: **50°C**
- fan efficiency: **360 m³/h**
- noise level: **49 dB**
- dimensions (length/width/height):
370/340/147 mm



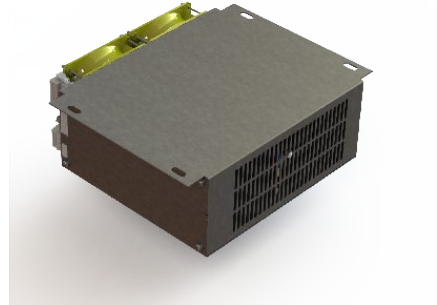
LIM NE-01/M01

- rated heating voltage: **700 V DC**
- rated heating power: **3 kW**
- blowing temperature: **55°C**
- fan efficiency: **520m³/h**
- noise level: **60 dB**
- dimensions (length/width/height):
310/290/177 cm



LIM NE-01/M02

- rated heating voltage: **700 V DC**
- rated heating power: **3 kW**
- blowing temperature: **55°C**
- fan efficiency: **max. 520m³/h**
- noise level: **60 dB**
- dimensions (length/width/height):
345/290/120 mm



LIM NE-15

- rated heating voltage: **700 V DC**
- rated heating power: **5 kW**
- blowing temperature: **~70°C**
- noise level: **62 dB**
- dimensions (length/width/height):
320/227/504.50 mm



LIM NE-15/400V

- rated heating voltage: **3x400 V AC**
- rated heating power: **5 kW**
- blowing temperature: **~70°C**
- noise level: **62 dB**
- adjustable blowing speed
- dimensions (length/width/height):
414/243/98.2 mm



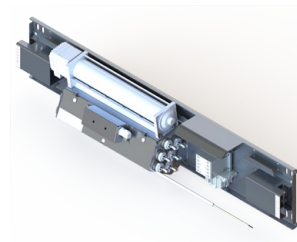
LIM NE-18/M01

- rated heating voltage: **230 V AC**
- rated heating power: **1.2 kW**
- blowing temperature: **50°C**
- dimensions (length/width/height):
450/245/88 mm



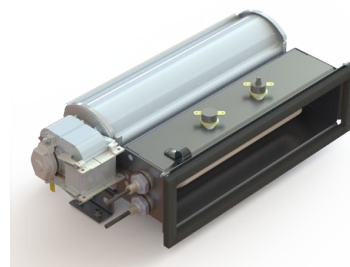
LIM NE-19

- rated heating voltage: **3x400 V**
- rated heating power: **1 kW**
- blowing temperature: **45°C**
- fan efficiency: **110 m³/h**
- noise level: **49 dB**
- dimensions (length/width/height):
780/172.08/124.5 mm



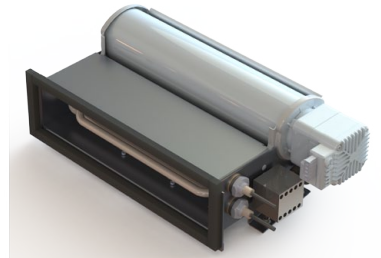
LIM NE-20/230V

- rated heating voltage: **230 V**
- rated heating power: **1 kW**
- blowing temperature: **45°C**
- fan efficiency: **220 m³/h**
- noise level: **49 dB**
- dimensions (length/width/height):
324/180,3/132,3 mm



LIM NE-20/24V

- rated heating voltage: **400 V AC**
- control/fan voltage: **24 V DC**
- rated heating power: **1 kW**
- blowing temperature: **45°C**
- fan efficiency: **220 m³/h**
- noise level: **49 dB**
- dimensions (length/width/height):
324/180,3/132,3 mm



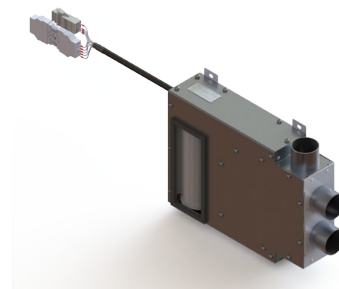
LIM NE-23/M01

- rated heating voltage: **3x400 V AC**
- rated heating power: **1 kW / 1.5 kW**
- blowing temperature: **55°C**
- fan efficiency for 1 kW power:
180 m³/h
- fan efficiency for 1.5 kW power:
210 m³/h
- noise level: **49 dB**
- dimensions (length/width/height):
416/285/102 mm



LIM NE-23/M04

- rated heating voltage:
3x400 V AC / 3x230 V AC
- rated heating power: **1.5 kW**
- blowing temperature: **550°C**
- fan efficiency: **210 m³/h**
- Pt100 blower temperature sensor
- dimensions (length/width/height):
416/285/102 mm



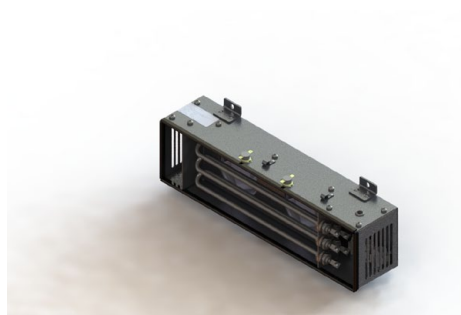
LIM NE-24

- rated heating voltage: **700 V DC**
- control/fan voltage: **24 V DC**
- rated heating power: **3 kW**
- blowing temperature: **65°C**
- dimensions (width/diameter):
286/ø256 mm



LIM NE-25

- rated heating voltage: **3x400 V AC**
- rated heating power: **1 kW**
- blowing temperature: **50°C**
- dimensions (length/width/height):
469.5/106.2/164.2 mm

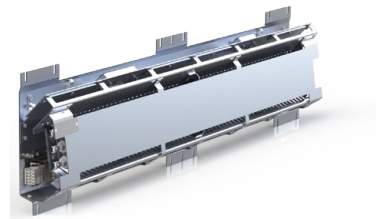


// EFFICIENCY IN A COMPACT SIZE

CONVECTION HEATERS

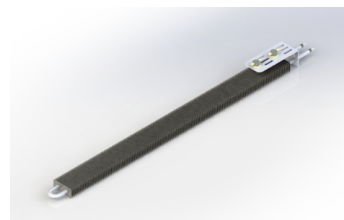
LIM NK2

- rated heating voltage: **3x400 V AC**
- rated heating power: **750 W**
- blowing temperature: **55°C**
- dimensions (length/width/height):
1040/228/76.79 mm



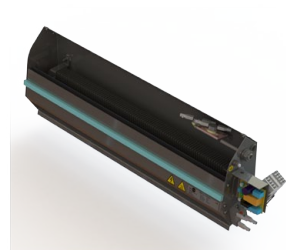
LIM NK3

- rated heating voltage: **400 V AC**
- rated heating power: **250/500 W**
- blowing temperature: **40°C**
- dimensions (length/width/height):
 - 250 W: **500/96/46 mm**
 - 400 W: **800/96/46 mm**



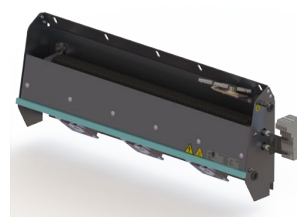
LIM NK6

- rated heating voltage: **400 V AC**
- control voltage: **24 V DC**
- rated heating power: **500 W**
- blowing temperature: **55°C**
- dimensions (length/width/height):
566/184.4/93.7 mm



LIM NK6/M03

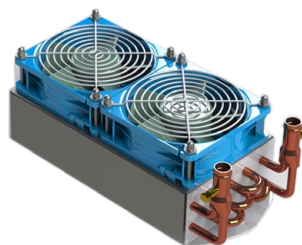
- rated heating voltage: **400 V AC**
- control voltage: **24 V DC**
- rated heating power: **500 W**
- blowing temperature: **55°C**
- dimensions (length/width/height):
566/184.4/93.7 mm



WATER HEATERS

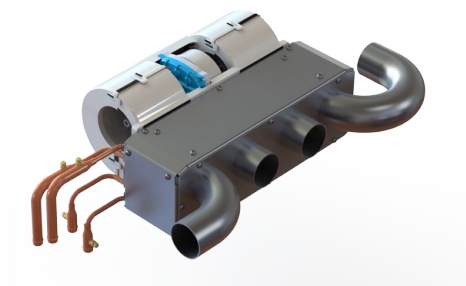
LIM NW-02

- control voltage: **24 V DC**
- rated heating power: **2.9 kW**
- heat transfer coefficient:
44.31 W/(m²k)
- fan efficiency: **410 m³/h**
- noise level: **46 dB**
- dimensions (length/width/height):
312/148/112 mm



LIM NW-03

- control voltage: **24 V DC**
- rated heating power: **8 kW**
- air flow: **705 m³/h**
- heat transfer coefficient:
89.67 W/(m²k)
- dimensions (length/width/height):
678.7/362.5/241.3 mm





LIMATHERM SENSOR LLC

1 Skrudlak Str.
34-600 Limanowa
Poland

phone: **+48 18 330 1000**
mail: **akp@limathermsensor.pl**

*WITH DECADES OF EXPERIENCE AND A FOCUS ON INNOVATION,
WE DELIVER HEATING SYSTEMS THAT MEET THE HIGHEST
STANDARDS OF SAFETY, DURABILITY, AND PERFORMANCE
IN MODERN RAIL TRANSPORT.*

HEATING SYSTEMS FOR RAILWAYS

RELIABLE THERMAL SOLUTIONS
FOR SAFE AND EFFICIENT RAILWAY OPERATIONS.



WWW.LIMATHERMSENSOR.COM